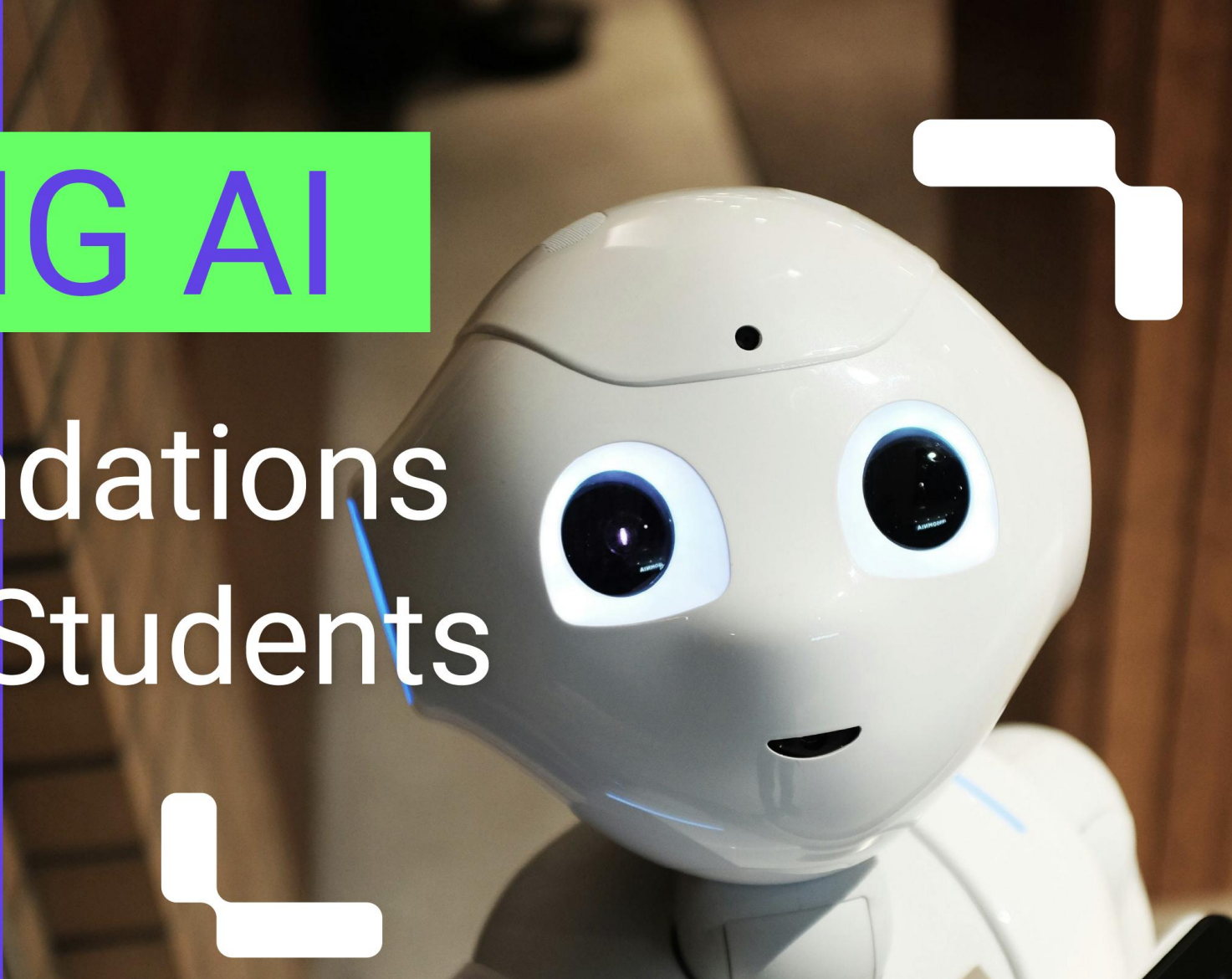


UNPACKING AI

Practical Foundations for Non-Tech Students



Unpacking AI– Practical Foundations for Non-Tech Students

Curious About AI but Not Sure Where to Start?

Not to worry! There is no prior coding experience needed.



Whether you're looking to stay relevant or explore new career opportunities, this course will help you unpack the fundamentals of AI in a clear, engaging, and accessible way.

Get a heads-up! Learn the foundational skills to leverage AI in diverse fields such as Operations, Strategy, Research, Policy, Finance, and Marketing- & build yourself a strong foundation for the future of work.

WHO SHOULD TAKE THIS COURSE?

Designed for the new generation of learners belonging to **non-technical backgrounds at university levels!**

Ideal For	Format	Duration
Students from all disciplines at university level, especially non-technical backgrounds!	100% Online Interactive Modules Certificate upon Completion	15 hours



Earn a joint Certificate from German International Cooperation (GIZ) and Humboldt Institute for Internet & Society (HIIG), Germany.



Comprehensive Foundations: Offering a well-rounded perspective by covering AI fundamentals, societal impacts, and ethical considerations, while encouraging a critical reflection of the use of AI.



Pathway to Further Learning: Guides students to explore advanced AI topics with provided resources, fostering lifelong learning

IN THIS COURSE YOU'LL LEARN ABOUT

Module 1: What is AI?

Module 2: Basic Technical Foundations

Module 3: Societal Risks of AI

Module 4: Governing AI

Module 5: AI and Inequality

Module 6: AI for Public Interest

A COURSE THAT TARGETS OVERARCHING COMPETENCIES LIKE ...

- Understanding the **Concept & Technical foundations of AI**
- Considering **Human-Centred Perspectives** in the design and use of AI
- Identifying the main **Challenges & Potentials** of the use of AI
- Acquiring **critical thinking skills** in scoping a problem to be solved by an AI system.

Certification

To support continuous learning, each module includes a summative assessment. At the end of the course, a final assessment must be completed with a minimum score of 50%. Learners who meet this requirement will receive a certificate of successful completion.



Scan the QR Code to register on Atingi and Enrol Now!



Course Link-<https://online.atingi.org/enrol/index.php?id=5856>

[DS2S Website](#)

Support Contact Info:

succeed@giz.de

Follow us for updates:



[DS2S LinkedIn Page](#)

University Partners



Ahsanullah University of Science and Technology



Begum Rokeya University, Rangpur



Central Women's University



ALEXANDER VON HUMBOLDT
INSTITUTE FOR INTERNET
AND SOCIETY

Humboldt Institute for Internet and Society



UNIVERSITÄT
LEIPZIG

University of Leipzig



Christ University



Jamia Millia Islamia



Maharashtra State Skill University



Rama Devi Women's University Bhubaneswar



Academy of Public Administration and Governance (APAG)



National Economics University (NEU)



University of Economics, Ho Chi Minh City (UEH)



University of Social Sciences and Humanities Viet Nam National University (USSH)



Vietnamese-German University

Vietnamese-German University (VGU)



Vietnam Women's Academy (VWA)